



KIPPLA KASTLE 2.0

Team Members: Jose Gonzalez, Safa Al Mahbub, Juan Perez
Faculty Advisor: Dr. Russ Abbott, Jungsoo (Sue) Lim
Knowledge is Power Program Liaison: Kimberly and Nicole
Department of Computer Science
College of Engineering, Computer Science, and Technology
California State University, Los Angeles



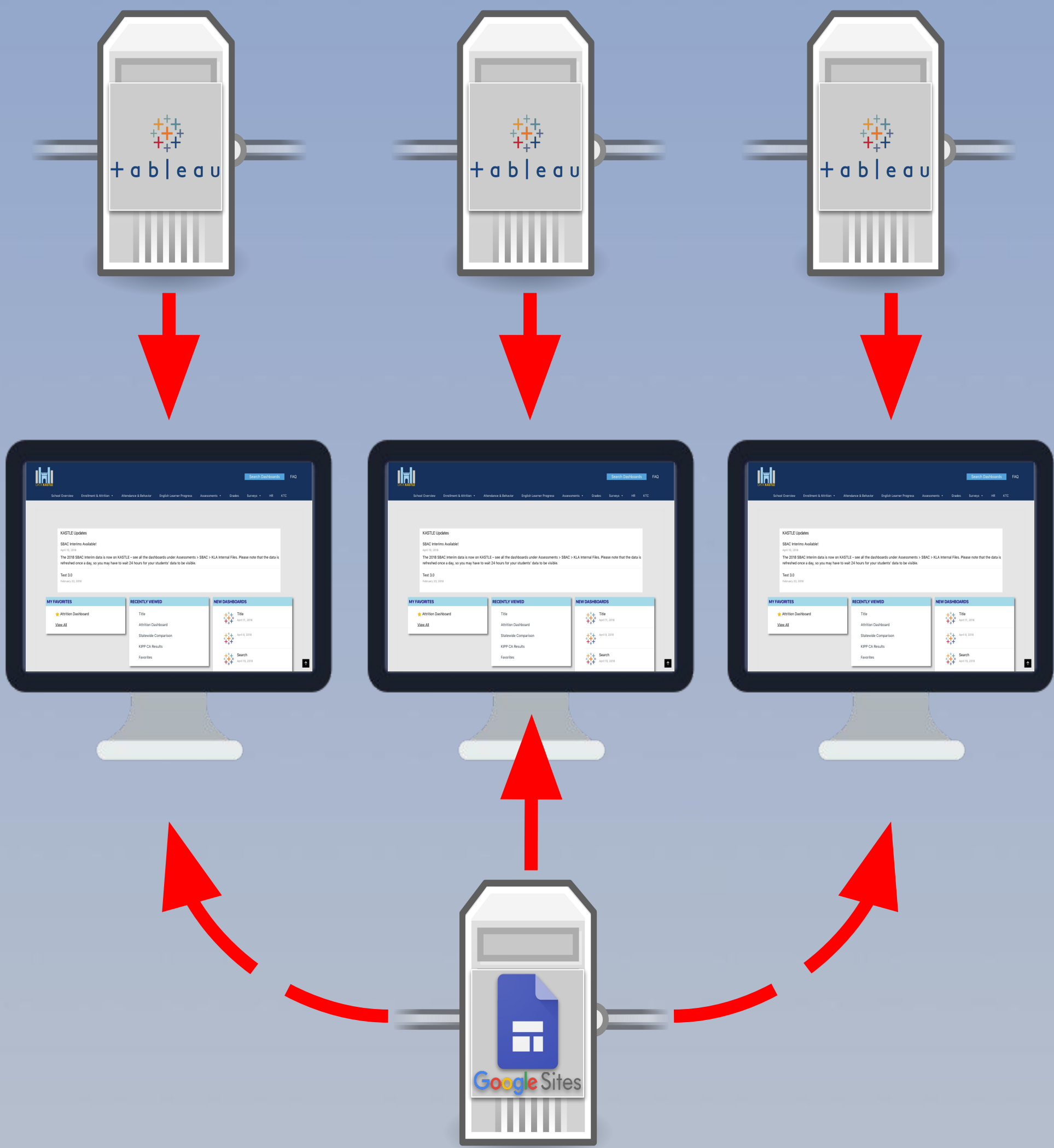
Background

Kippla’s website “KASTLE” is currently made with Google Sites, which had limited functionality. A major issue with our current setup is Google does not handle priority levels, as a result we have to maintain three separate website, and update them all at the consistently. Aside from this issue, our website needs to support Tableau Dashboards, have comments, and have a google sign in.

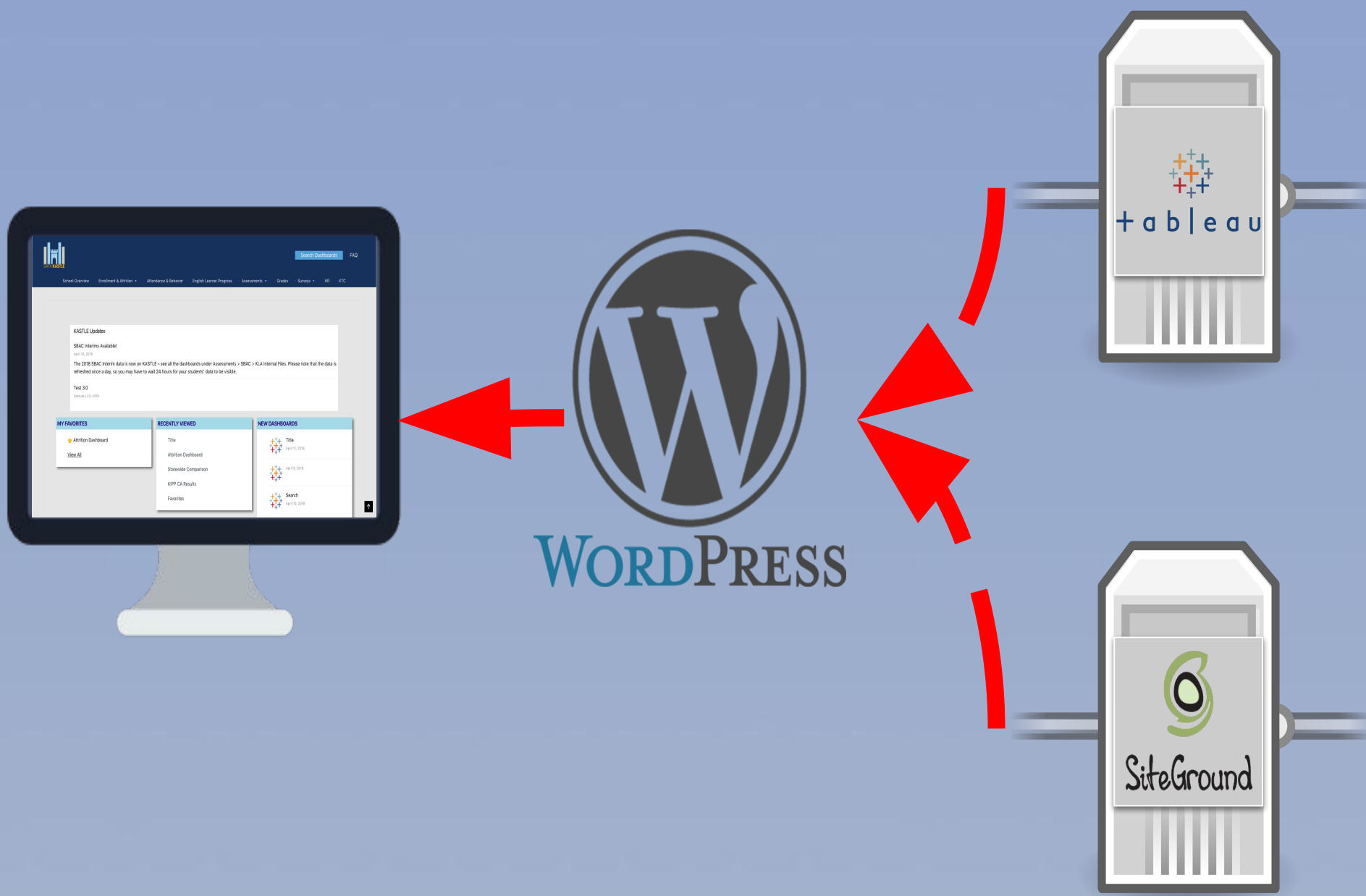
Objective

To create a nice, easy to use website for KIPPLA. We will be using the Content Management System (CMS) Wordpress to create the websites, which will be hosted on SiteGround.

How it Works Now



Goal



Toole Used

